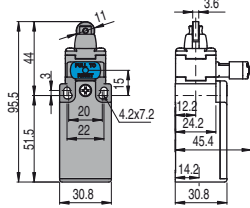


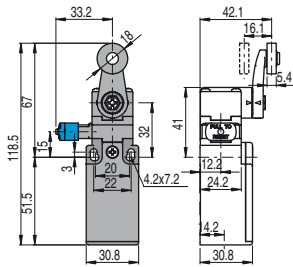
Contact type:

R = snap action
L = slow action

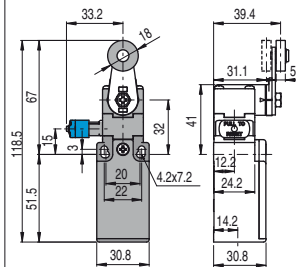
With Ø 12 mm stainless steel roller on request



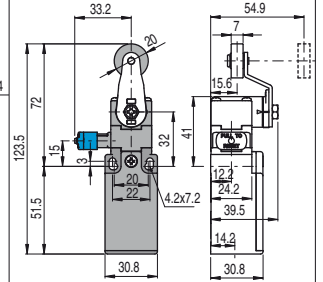
With Ø 20 mm stainless steel roller on request



Other rollers available. See on page 70



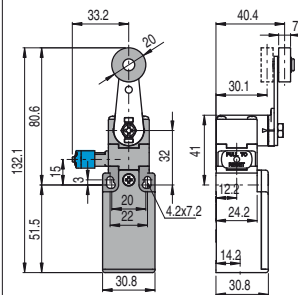
Other rollers available. See on page 70



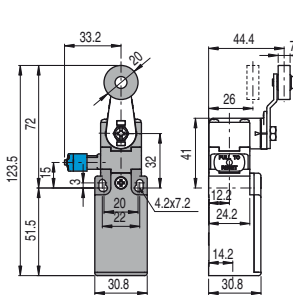
Contact blocks

6	L	FR 615-W3M2	⊕ 1NO+1NC	FR 630-W3M2	⊕ 1NO+1NC	FR 631-W3M2	⊕ 1NO+1NC	FR 651-W3M2	⊕ 1NO+1NC
9	L	FR 915-W3M2	⊕ 2NC	FR 930-W3M2	⊕ 2NC	FR 931-W3M2	⊕ 2NC	FR 951-W3M2	⊕ 2NC
10	L	FR 1015-W3M2	2NO	FR 1030-W3M2	2NO	FR 1031-W3M2	2NO	FR 1051-W3M2	2NO
20	L	FR 2015-W3M2	⊕ 1NO+2NC	FR 2030-W3M2	⊕ 1NO+2NC	FR 2031-W3M2	⊕ 1NO+2NC	FR 2051-W3M2	⊕ 1NO+2NC
21	L	FR 2115-W3M2	⊕ 3NC	FR 2130-W3M2	⊕ 3NC	FR 2131-W3M2	⊕ 3NC	FR 2151-W3M2	⊕ 3NC
22	L	FR 2215-W3M2	⊕ 2NO+1NC	FR 2230-W3M2	⊕ 2NO+1NC	FR 2231-W3M2	⊕ 2NO+1NC	FR 2251-W3M2	⊕ 2NO+1NC
2	R	FR 215-W3M2	2NO+2NC	FR 230-W3M2	2NO+2NC	FR 231-W3M2	2NO+2NC	FR 251-W3M2	2NO+2NC
Max. speed		page 239 - type 2		page 239 - type 1		page 239 - type 1		page 239 - type 1	
Min. force		4.5 N (25 N ⊕)		0.07 Nm (0.25 Nm ⊕)		0.07 Nm (0.25 Nm ⊕)		0.07 Nm (0.25 Nm ⊕)	
Travel diagrams		page 241 - group 1		page 241 - group 4		page 241 - group 4		page 241 - group 4	

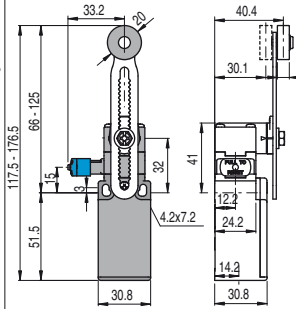
Other rollers available. See on page 70



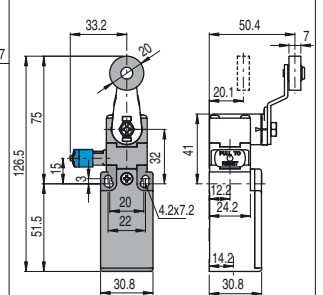
Other rollers available. See on page 70



Other rollers available. See on page 70



Other rollers available. See on page 70

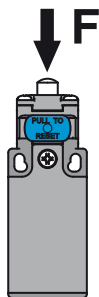


Contact blocks

6	L	FR 652-W3M2	⊕ 1NO+1NC	FR 654-W3M2	⊕ 1NO+1NC	FR 656-W3M2	⊕ 1NO+1NC	FR 657-W3M2	⊕ 1NO+1NC
9	L	FR 952-W3M2	⊕ 2NC	FR 954-W3M2	⊕ 2NC	FR 956-W3M2	⊕ 2NC	FR 957-W3M2	⊕ 2NC
10	L	FR 1052-W3M2	2NO	FR 1054-W3M2	2NO	FR 1056-W3M2	2NO	FR 1057-W3M2	2NO
20	L	FR 2052-W3M2	⊕ 1NO+2NC	FR 2054-W3M2	⊕ 1NO+2NC	FR 2056-W3M2	⊕ 1NO+2NC	FR 2057-W3M2	⊕ 1NO+2NC
21	L	FR 2152-W3M2	⊕ 3NC	FR 2154-W3M2	⊕ 3NC	FR 2156-W3M2	⊕ 3NC	FR 2157-W3M2	⊕ 3NC
22	L	FR 2252-W3M2	⊕ 2NO+1NC	FR 2254-W3M2	⊕ 2NO+1NC	FR 2256-W3M2	⊕ 2NO+1NC	FR 2257-W3M2	⊕ 2NO+1NC
2	R	FR 252-W3M2	2NO+2NC	FR 254-W3M2	2NO+2NC	FR 256-W3M2	2NO+2NC	FR 257-W3M2	2NO+2NC
Max. speed		page 239 - type 1		page 239 - type 1		page 239 - type 1		page 239 - type 1	
Min. force		0.07 Nm (0.25 Nm ⊕)		0.07 Nm (0.25 Nm ⊕)		0.07 Nm (0.25 Nm ⊕)		0.07 Nm (0.25 Nm ⊕)	
Travel diagrams		page 241 - group 4		page 241 - group 4		page 241 - group 4		page 241 - group 4	

All measures in the drawings are in mm

Increased actuating force



The switch can be delivered with increased actuating force (option W4). Ideal for applications with vibrations.

Actuators	Min. force
01, 14, 15, 16	7 N
02, 05	6 N
07	3.5 N
30 ... 57	0.08 Nm

Accessories See page 225